

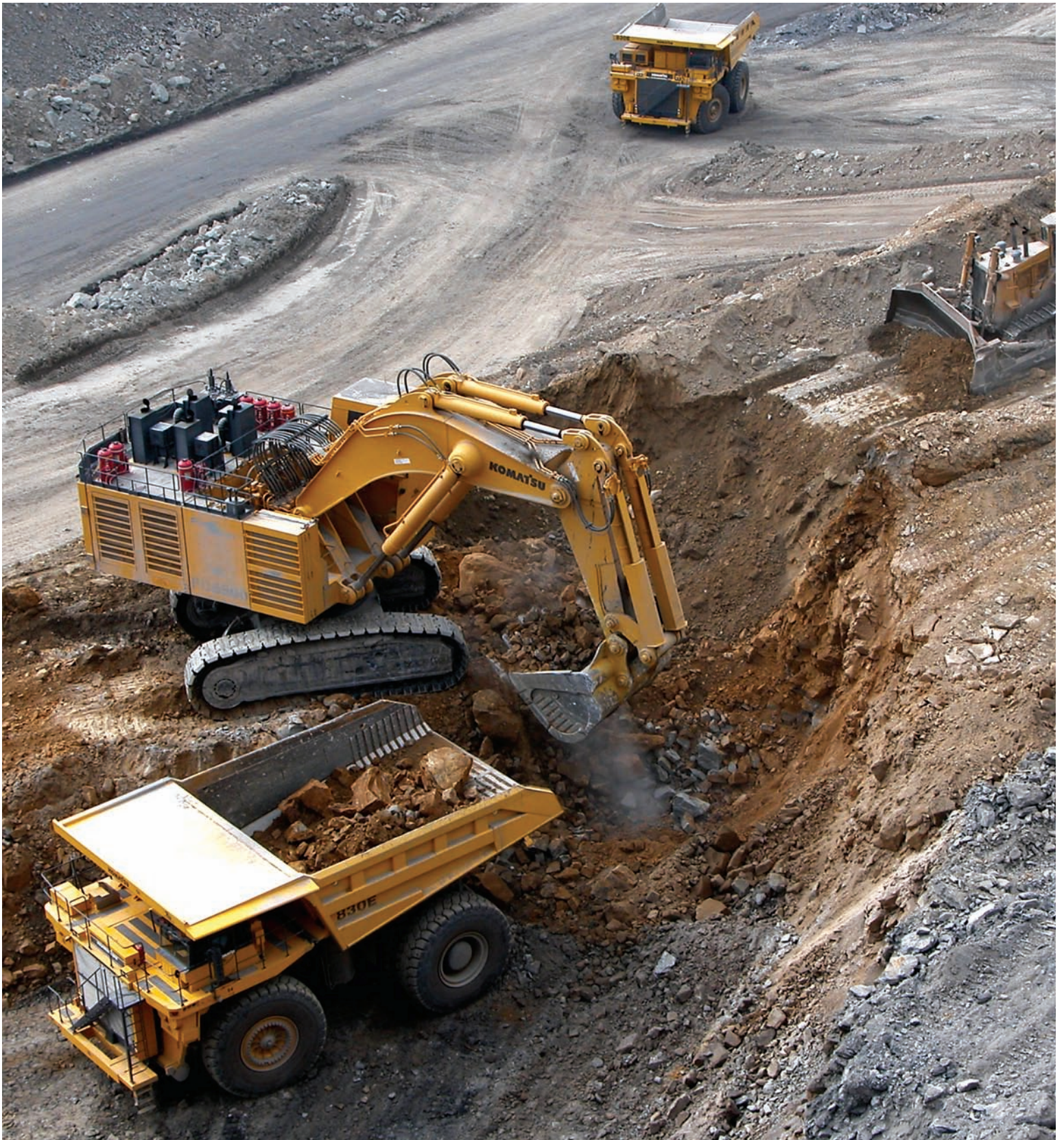


TOUGH CUSTOMERS

Mobile Equipment Fire Suppression Systems



A Tyco International Company



PROTECTING HEAVY EQUIPMENT CALLS FOR BRUTE FORCE

Before the introduction of ANSUL® vehicle fire suppression systems to the mining industry in the late 1960s, the loss of equipment, productivity and life to vehicle fire was all too common. Today, ANSUL protection is the preferred solution in this and other high-risk industries. Around the world, industries that depend on their heavy equipment trust ANSUL non-road mobile fire suppression solutions to protect them.



SYSTEMS DESIGNED FOR MODERN REALITIES

Excavators, tunnel boring machines, harvesters, transit buses and other heavy machines work around the clock, often in rugged, hazardous environments. Highly flammable fuels, oils and hydraulic fluids flow through pressurized lines within inches of super-heated engine blocks, manifolds and turbochargers. One ruptured line can result in fast-spreading fire. With ANSUL Vehicle Fire Suppression Systems, however, protection is assured, 24-hours-a-day, 365 days-per-year.

FM APPROVED ■ NFPA, UL 1254, AND AS 5062 COMPLIANT ■ CE MARKED

GLOBAL DISTRIBUTION NETWORK ■ PROVEN CARTRIDGE OPERATION

MULTIPLE CONFIGURATION/DESIGN OPTIONS ■ EFFECTIVE ON A RANGE OF FIRES

MANUAL OR AUTOMATIC DETECTION/ACTUATION

SAFEGUARDING INVESTMENTS AROUND THE WORLD

Protecting mobile equipment of all shapes and sizes presents a unique set of challenges often requiring multiple solutions. Investing in an ANSUL fire detection/suppression system can minimize repairs and replacement, keep insurance cost down, reduce downtime, and help prevent operator injury. Trained ANSUL distributors can design, install and service a system that offers the ultimate fire protection for a specific vehicle.

ANSUL® LVS LIQUID AGENT FIRE SUPPRESSION SYSTEMS

ANSUL LVS agent flows readily into areas where flammable liquids settle providing both fire suppression and superior cooling of superheated surfaces while blanketing the fuel and cutting off oxygen to help prevent reflash.

- Corrosion-resistant tank capacities of 5 to 30 gallons (18.9 to 113.6 L)
- LVS offers extremely flexible design options and ease of service
- 30 to 60 seconds of discharge effective on Class A combustibles

CUSTOMERS WHO BENEFIT FROM ANSUL MOBILE EQUIPMENT FIRE SUPPRESSION SYSTEMS:

- AGRIBUSINESS
- AVIATION
- FORESTRY
- METAL PROCESSING
- POWER GENERATION
- SURFACE AND UNDERGROUND MINING
- TRANSPORTATION
- WASTE PROCESSING

LVS LIQUID AGENT SYSTEM



A-101 DRY CHEMICAL SYSTEM



- Effective operating range of -40 to 140°F (-40 to 60°C)
- Proven for ten years in applications using superheated equipment

ANSUL® A-101 DRY CHEMICAL FIRE SUPPRESSION SYSTEMS

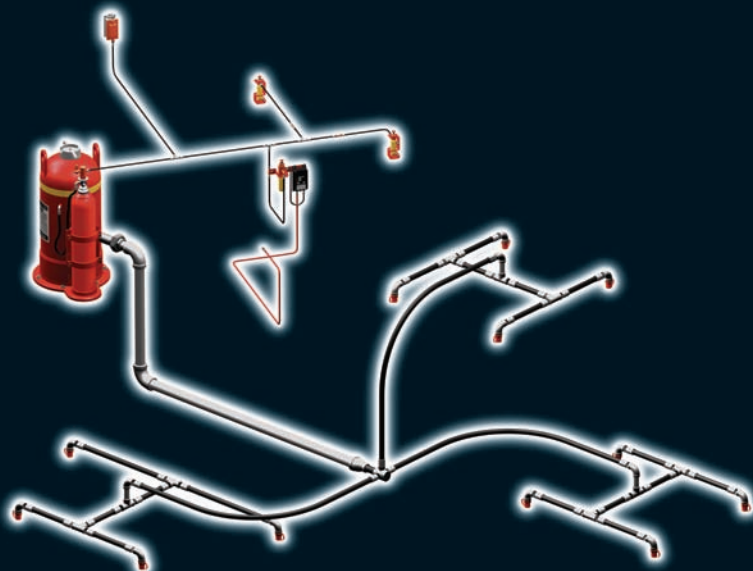
FORAY multipurpose dry chemical agent quickly knocks down flames by total flooding of entire volumes or direct application on specific high-hazard targets.

- 10 to 250 lb. (4.5 to 113.4 kg) agent tank capacities
- LT-A-101 model is approved for use in temperature extremes from -65 to 210°F (-54 to 99°C).
- LT-LP-A-101 low-profile model provides protection in environments and applications where space is at a premium.

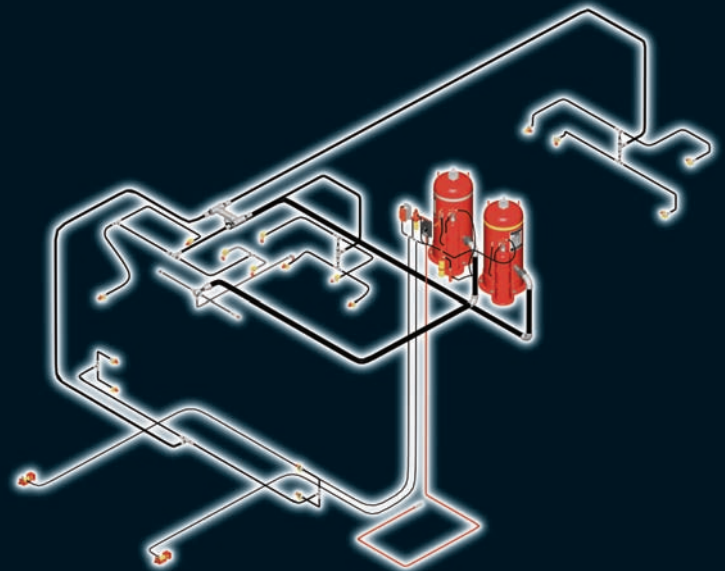
ANSUL® A-101/LVS TWIN-AGENT FIRE SUPPRESSION SYSTEMS

For those who want the combined performance of a twin-agent system, FORAY dry chemical and LVS agent provide the ultimate one-two punch. While the dry chemical is knocking down flames, superior LVS agent cools surrounding areas while helping to minimize the possibility of reflash. LVS system components are built for corrosion resistance and operate effectively within a temperature range of -40 to 140°F (-40 to 60°C).

A-101 LARGE DRY CHEMICAL SYSTEM



A-101/LVS TWIN-AGENT SYSTEM



CHECKFIRE DETECTION AND ACTUATION SYSTEMS

Exclusive ANSUL CHECKFIRE electronic detection and actuation systems provide detection, alarm, machine shutdown and actuation — all automatically if so desired.

■ CHECKFIRE SC-N (Self-Contained)

Rugged control modules resist shock and vibration, and feature internal diagnostics and internal/external power sources. Thermal detection options include linear wire or spot detectors.

■ CHECKFIRE MP-N (Mine Permissible)

Offers all the features of SC-N, plus holds MSHA approvals for use in underground mines (Permissible Applications in Explosive Methane/Air Applications).

SHARPEYE 20/20 TRIPLE IR DETECTOR

For those who desire an extra level of protection, ANSUL SharpEye infrared detection provides advanced triple-IR flame detection. Added to existing linear wire or spot detection, fire can be detected much earlier, allowing suppression to begin that much sooner. SharpEye features include sensitivity selection, automatic built-in testing, compact size and 100-degree field of vision. RS 485 compatible and FM approved. Ask your ANSUL dealer for more information on the benefits of SharpEye.

PACK RED LINE BACKUP SUPPORT

As backup to the primary fire suppression system, ANSUL RED LINE dry chemical cartridge-operated extinguishers are highly recommended. These rugged, reliable handheld units are a proven means of extinguishing a wide range of Class A, B and C fires, and provide that extra measure of protection as required by authorities having jurisdiction.



ANSUL® SYSTEMS PROTECT THE WIDEST RANGE OF INDUSTRIES AND EQUIPMENT

AGRIBUSINESS

- Combines
- Cotton Harvesters
- Hay and Forage
- Sprayers
- Tractors

AVIATION

- Deicers
- Tow Tractors

FORESTRY

- Chippers
- Combi Machines
- Feller Bunchers
- Forwarders
- Harvesters
- Loaders
- Log Stackers
- Skidders
- Tub Grinders

METAL PROCESSING

- Coil Carriers
- Pallet Carriers
- High Stackers
- Ladle Carriers
- Slab Carriers
- Slag Carriers
- Straddle Carriers

MINING

- Belthead Conveyers
- Blasthole Drills
- Continuous Miners
- Crawler Dozers
- Draglines
- Electric Shovels
- Excavators
- Haul Trucks

- Haulage Tractors
- Locomotives
- Longwall Systems
- Motor Graders
- Personnel Carriers
- Scoops
- Specialty Vehicles and Machines
- Switchers
- Tunnel Boring Machines
- Wheel Loaders

POWER GENERATION/UTILITIES

- Coal Pile Maintenance
 - Crawler Dozers
 - Scrapers
 - Wheel Loaders

TRANSPORTATION

- Commercial Transit Buses
 - Alternative Fuel
 - Para Transit
 - School
- Intermodal Rail and Port Machines
 - Container Handlers
 - Gantry Cranes
 - Quay Cranes
 - Reach Stackers
 - Side Loaders
- Railway Track and Structures
 - Ballast Machines
 - Right-of-Way
 - Tie Handling and Replacement
 - Track Maintenance
 - Wrecking Cranes

WASTE PROCESSING

- Landfill Compactors
- Refuse Trucks
- Transfer/Recycle Station





One Stanton Street
Marinette, WI 54143-2542

+1-800-862-6785 (United States, Canada)
+1-715-735-7411 (International)
www.ansul.com

